

# HAMNER AVENUE BRIDGE & WIDENING PROJECT



## Construction Update: Week of April 26, 2021

Daytime work and intermittent lane closures continue on Hamner Avenue, weather permitting.

### Hamner Avenue

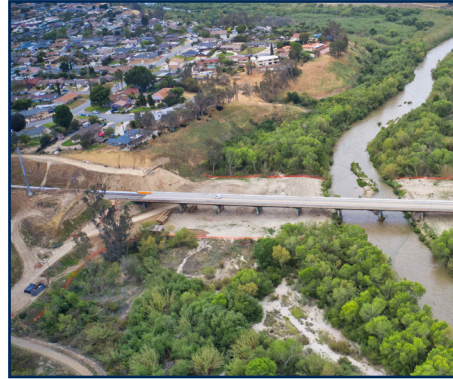
- From Citrus Street to Schleisman Road, crews continue waterline work.
- Please drive with caution through the construction zone.

### Southwest slope/Bridge support system

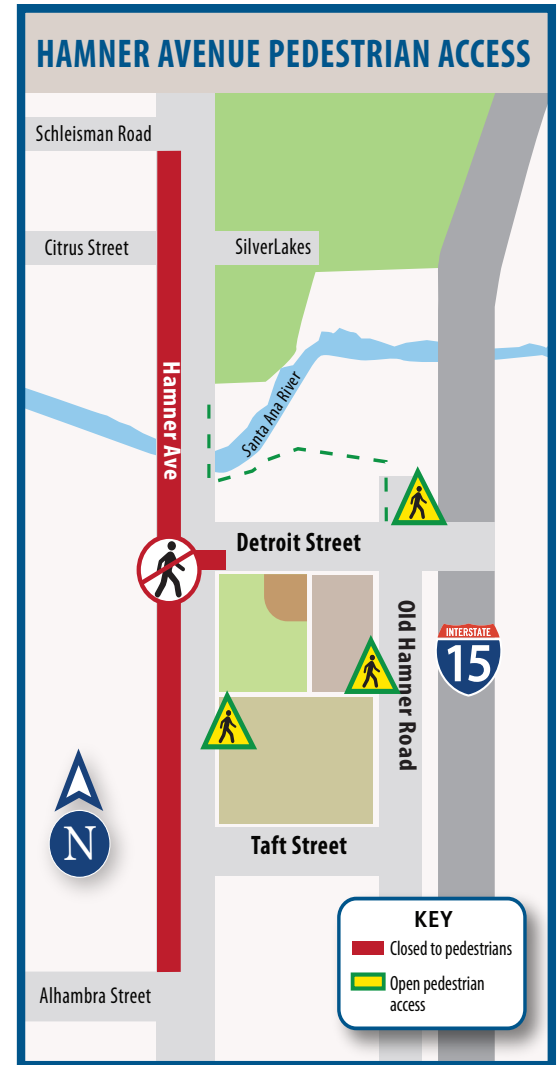
- Crews will complete shoring on the western slope of Hamner Avenue in preparation for excavation work along the roadway.
- Iron workers and carpenters continue rebar and form work for the bridge support system footing in the riverbed near the southwest slope.



Aerial view of the project looking south with shoring work on bridge support system to the right.



West-looking aerial view of the bridge and the Santa Ana River.



### Pedestrian Access Changes

- From Schleisman Road to Citrus Street, the southbound sidewalk is closed.
- From Detroit to Alhambra streets, the southbound sidewalk is closed.
- The crosswalk at Detroit Street and Hamner Road is closed.
- The footpath across the bridge on the east/northbound side is open and accessible by Old Hamner Road.



## STAY CONNECTED

[www.HamnerAveProject.com](http://www.HamnerAveProject.com)

877.278.7606

@HamnerAveProject



The contents of this alert are subject to change without warning due to weather or unforeseeable construction changes.

### Project Partners

